

How to Use a Custom Profile in Adobe Illustrator on Windows

Step 1: Download and move the profile

1. Download the profile(s) from our website or that were emailed to you from us.
2. Once downloaded, you will need to move the file to the system folder on your computer where all of your profiles are stored. The location will depend on what version of Windows you are running.

Refer to the list below:

Windows 98/ME

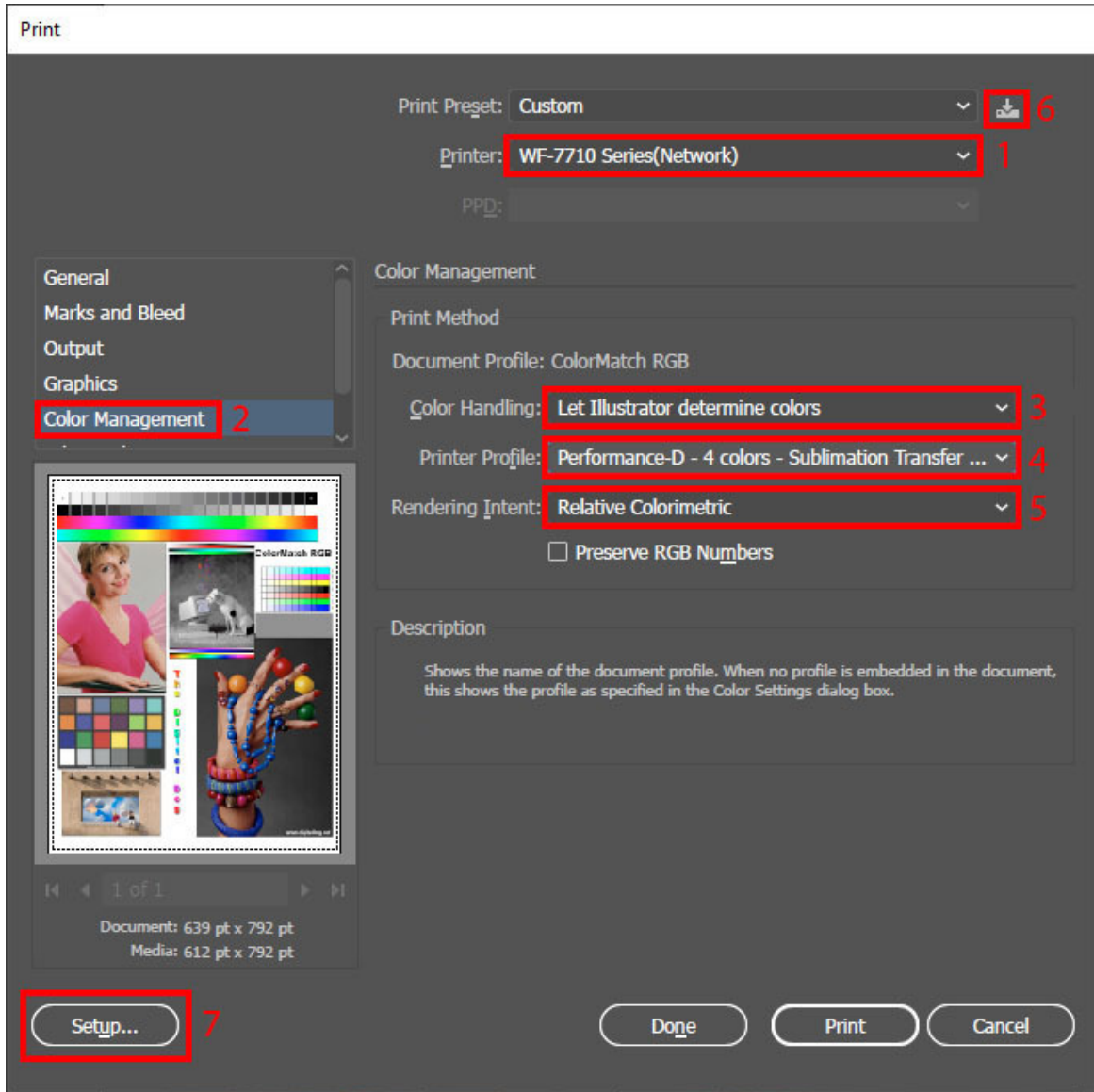
C:\Windows\System\Color\

Windows XP/Vista/7/8/10

C:\Windows\System32\Spool\Drivers\Color\

Step 2: Set up the profile

Select the picture that you want to print and then press *File* and then *Print* to open *Illustrator Print Settings*.

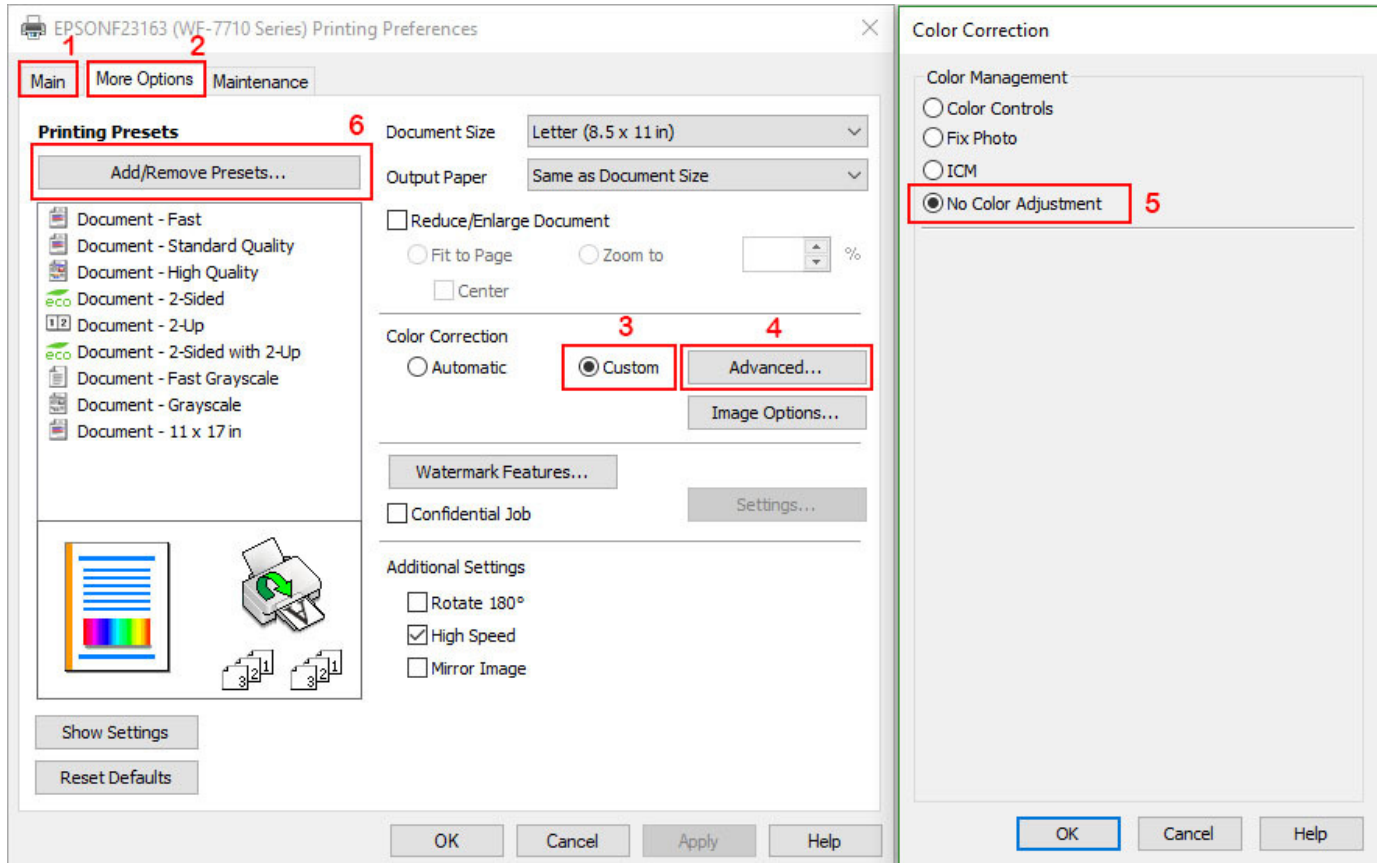


1. Select the printer you want to use.
2. Go to *Color Management*.
3. Set *Color Handling* to *Let Illustrator determine colors*.
4. Select the color profile you installed earlier.
5. Set *Rendering Intent* to *Relative Colorimetric*.
6. It is recommended to save these settings as a *Print Preset* by clicking on the printer icon.
7. Click on *Setup...* to set up the printer driver.

Step 3: Driver Settings

This step will vary, depending on the printer that you are using. Here are three common layouts that Epson drivers use:

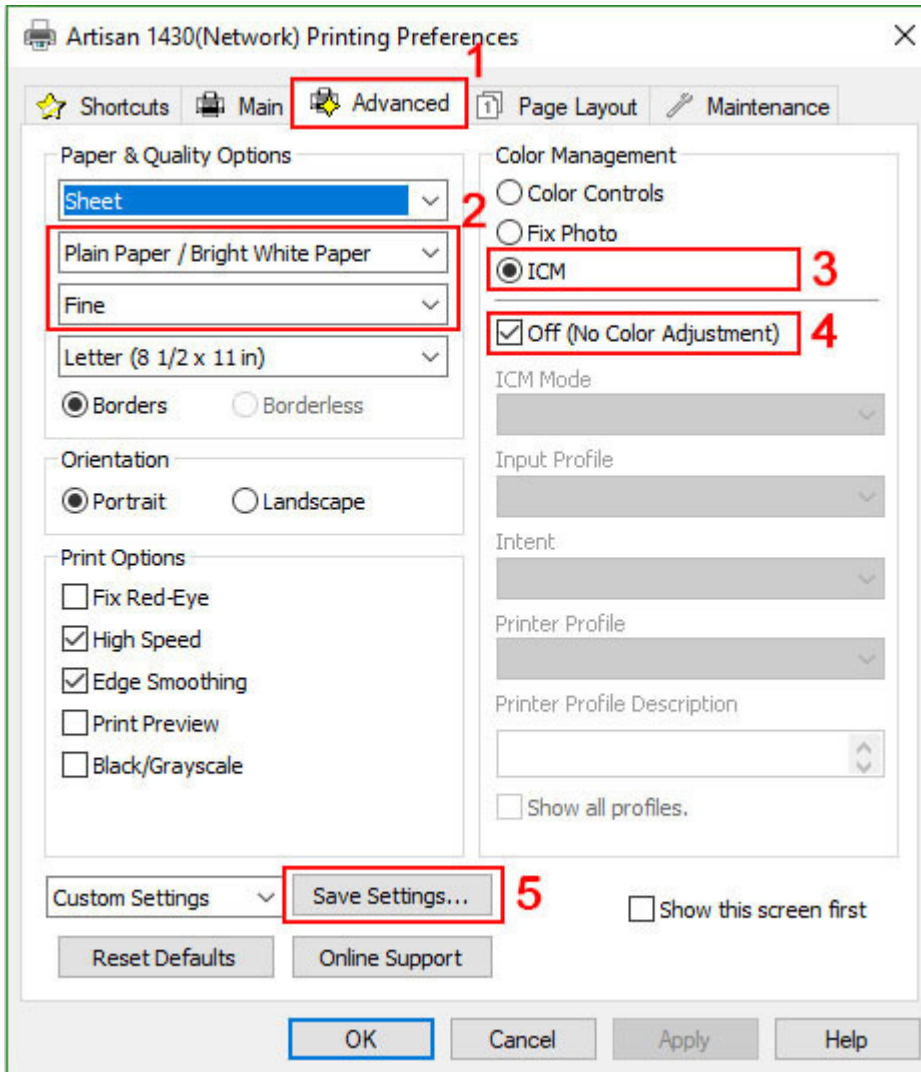
Version 1



1. On the *Main* tab, select the appropriate media type and quality setting for your print. (For sublimation, we recommend setting the paper type to *Plain Paper* and setting the quality to the highest setting. You will also usually want to print your images mirrored, so you should check the *Mirror Image* box on the next tab.)
2. Select the tab labeled *More Options*.
3. Set *Color Correction* to *Custom* to enable the *Advanced...* button.
4. Click on *Advanced...* to open the *Color Correction* menu.
5. Select *No Color Adjustment* and press *OK*.
6. To avoid having to do all this each time you print, we recommend saving a Preset. Press the *Add/Remove Presets...* button, give the preset a name, choose an icon and then click *Save*.

In the future, you can just click on your newly saved preset. You are now ready to print!

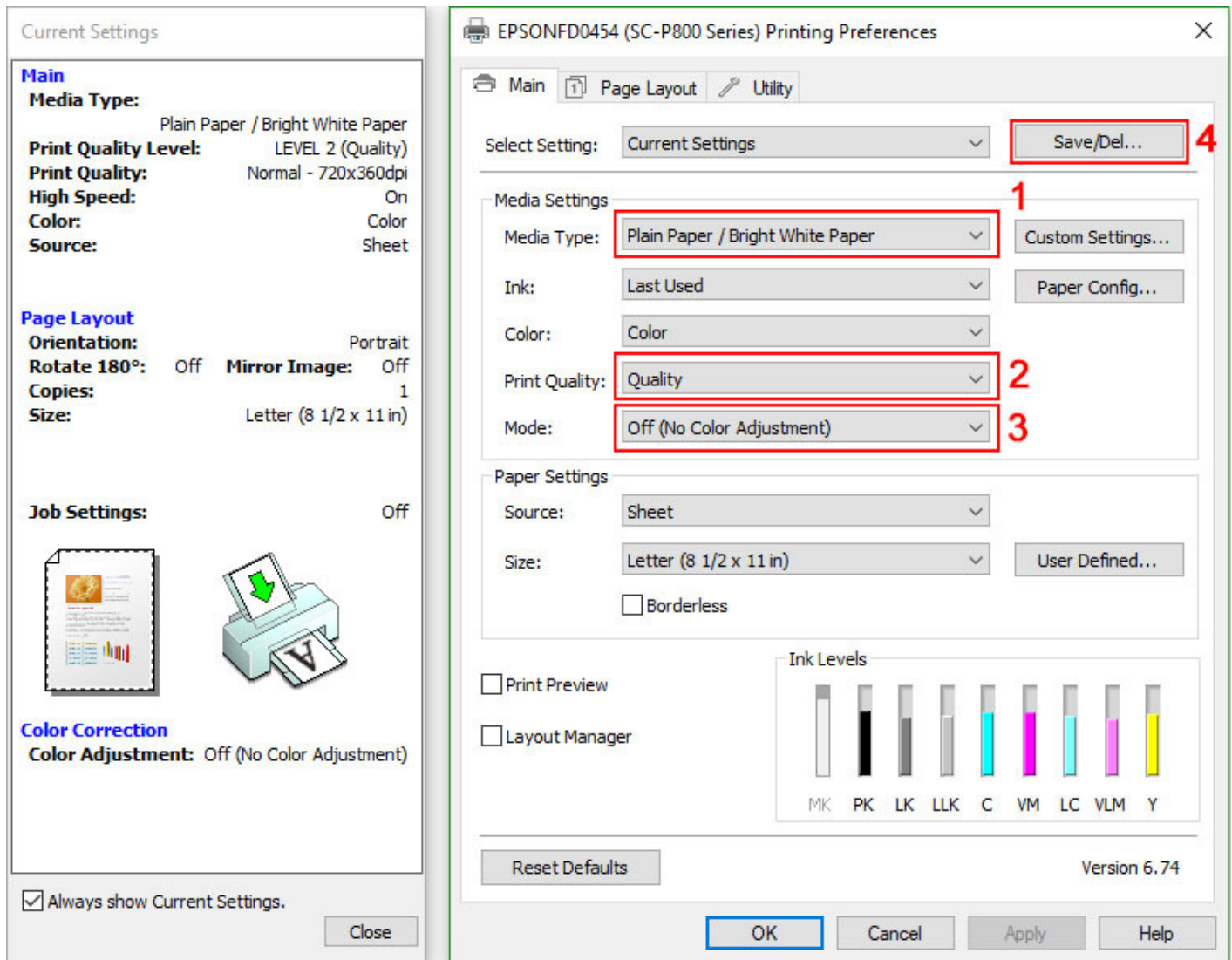
Version 2



1. Select the *Advanced* tab.
2. Select the appropriate media type.
(For sublimation, we recommend setting the paper type to *Plain Paper* and setting the quality to the highest setting. You will also usually want to print your images mirrored, so you should check the *Mirror Image* box on the next tab.)
3. Under *Color Management*, select *ICM*.
4. Once *ICM* is selected you will have the option to check the box labeled *Off (No Color Adjustment)*. Check the box.
5. To avoid having to do all this on each print, we recommend saving a Preset. Press the *Save Settings...* button to configure a new preset.

In the future, you can just click on your newly saved preset. You are now ready to print!

Version 3



1. Select the appropriate media type.
(For sublimation, we recommend setting the paper type to *Plain Paper*. You will also usually want to print your images mirrored, so you should check the Mirror Image box on the next tab.)
2. Set *Print Quality* to *Quality*.
3. *Mode* should be set to *Off (No Color Adjustment)*.
4. To avoid having to do all this each time you print, we recommend saving a Preset. Press the *Save/Del...* button to configure a new preset.

In the future, you can just click on your newly saved preset. You are now ready to print!